

2. GENETIC COUNSELING

Consanguinity
Multifactorial Disorders
Abnormal Chromosomal Reports
Family / Genetic Disorders
History of Multiple Congenital Anomalies
Pre-conceptional Counseling
Premarital Counseling

Patients are requested to bring all the reports of any previous investigations done elsewhere. Patients requiring additional investigations will be referred to other labs/Institutions.

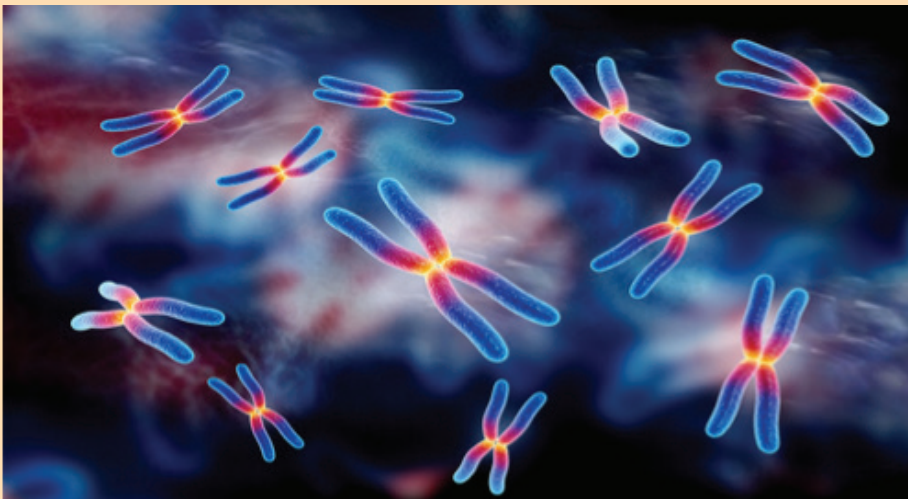
FOLLOW UP:

Patients and family are requested to visit preferably with prior appointments. At the time of counseling, the details for follow up are given.

WORKING HOURS

Monday to Saturday: 9.00 am to 5.00 pm.

Laboratory will remain closed on Sunday and Government Holidays



**Smt. Bangaramma Sajjan Campus, Sholapur Road,
Vijayapura-586 103, Karnataka, India
Phone: 08352-262770, email: bmpmc.anat@bldea.org**



BLDE UNIVERSITY

**SHRI B. M. PATIL MEDICAL COLLEGE, HOSPITAL
& RESEARCH CENTRE, VIJAYAPURA - 586103**

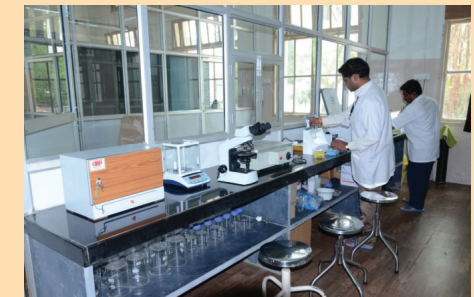
DEPARTMENT OF ANATOMY

GENETICS LABORATORY

North Karnataka has unique culture, customs and socio demography. Consanguineous marriage is a traditional practice in many communities around the world. The frequency of Consanguineous marriage more in north Karnataka region this is one of the causative reason for the chromosomal disorders, by keeping all these points we have established the Genetics Laboratory in the department of Anatomy in October 2015 with the primary objective of Chromosome analysis & Genetic Counseling. This is the **first kind of Genetics Lab** in this part of Karnataka.



Preparation of cell culture from peripheral blood



Culture Harvesting Laboratory

Goal:

To be a centre of excellence in human genetics which conducts research, trains researches, provides advanced diagnostic & counselling services to the needy.

OBJECTIVES:

- To understand the basic research in human genetics, molecular genetic basis of chromosomal, neurological, psychiatric & other rare genetic disorders.
- To explore the molecular basis of growth factors.
- To teach train students, staff and researcher in molecular genetic research methodologies
- To provide advanced diagnostic service and genetic counseling to the patients and their families.

Dr. S. P. Guggarigoudar,	Advisor
Dr. B. M. Bannur,	Professor & HoD
Dr. R.S.Bulagouda,	Associate Professor
Dr. G. S. Kadakol,	Research Scientist
Mr. B. S. Kattimani,	Lab Technician

Laboratory Equipments:

- Laminar Air Flow
- Co2 Incubator
- Olympus microscope with Gen ASIs Software
- Refrigerator
- Remi Centrifuge
- Water Bath
- Digital Weighing Balance
- Slide Chamber
- Hot Plate

Laboratory Facilities:

In Genetics Laboratory we provide the facility for

1. CHROMOSOMAL ANALYSIS

Recurrent Abortions
Chromosomal Abnormalities
Infertility
Congenital Malformations

REPORTING:

The report will be issued within 2 weeks from receipt of blood sample, in case of emergency provisional report will be issued within 4 days. The reports are to be collected from the Genetics Laboratory between 4-5 PM. Facility of online report will also available. In case of any abnormality, the patients / relatives are requested to come in person to collect the reports, followed by appropriate genetic counseling.

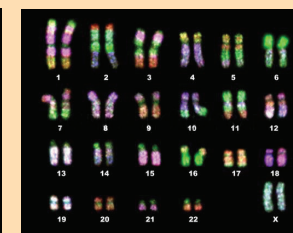


Chromosomes Analysis with the help of Olympus Microscope with Gen ASIs Software

HUMAN KARYOTYPE:



Male Karyotype 46XY



Female Karyotype 46XX



Down's Syndrome Trisomy 21